

# BFEC News

For more information visit our website at [bfec@hrce.ca](mailto:bfec@hrce.ca)

Follow us on Twitter @BFEC\_HRSB



## Who's the New Principal

Hi everyone,

My name is Cathy Burton and I am the new Principal at Bedford and Forsyth Education Centres. I have been a teacher and Vice Principal with the Halifax Regional Center for Education for twenty seven years. Most recently I have been a Vice Principal at Lockview High School in Fall River.

As an educator, I have never been more honored and excited than I am now. I have wanted to work with and for the students at BFEC for last few years. I look forward to meeting with you all!

I do believe in having an open door for students and I encourage all to come and see me any time.

Families, parents and guardians are also encouraged to stop in and introduce themselves. I can be located through the week at both the Bedford and Dartmouth campuses. My email address is [cburton@hrce.ca](mailto:cburton@hrce.ca) and my desk number is 902-832-8630, extension 7509.

### Quarter 1 Academic Awards:

Congratulations to the sixty students who received Honors, High Honors or Principal list awards for Quarter 1. That means sixty of our students had an average of 80% or greater!



## Quarter 2 Classes Begin

It has been a very busy start to the school year at BFEC! It is hard to believe that Quarter 1 classes have finished and that we are well into Quarter 2.

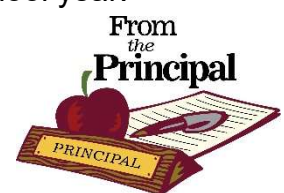
Expectations for students are for regular school attendance, being on time for classes, completing assigned course work and maintaining a positive and safe school environment. We want our students to be proud of their school, their community and to work towards graduation and transitioning to either the workplace or post-secondary options.

The staff of BFEC is here to support the learning and development of our students and to liaise and communicate with parent/guardians about learning. Please, do not hesitate to contact your teachers when you need extra help or support. Our social worker and guidance counsellors are available to support students and families.

I encourage you to log into the PowerSchool Student/Parent portal regularly to check attendance and marks (see Web-Based Student Information System below).

Please make sure that your most up to date address and phone number are in our system. I will be using Twitter, the school website, and School Messenger (the evening phone call system) to communicate with you on a regular basis throughout the school year.

Regards,  
Cathy Burton  
Principal  
BFEC



## School Closings and Delays



### School Cancellations Due to Weather

Student safety is the first priority of the Halifax Regional Center for Education when making school cancellations decisions. HRSB staff begins to gather information from various sources beginning at 4:30 am. Staff consults with Halifax Regional Municipality (HRM) staff on road conditions, local weather services, and Stock Transportation. By 5:30 am, staff makes a recommendation to the Superintendent based on the information gathered. If it is safe to have students on the roads and sidewalks, then schools will be open.

If not, all or some schools may be closed depending on the weather and road conditions in different areas of the board.

Parents/ guardians; winter is coming; do you have a childcare plan in place in the event of a school closure?

Do you know what Family of Schools your child's school belongs to? Parents/ guardians always have the right to keep their child home from school if they believe that the travelling conditions are unsuitable.

For full day closures of all or some schools, the decision will be announced as close to 6:00 am as possible.

Announcements will be:

- Posted on the HRCE website([www.hrce.ca](http://www.hrce.ca))
- Posted on the HRSB's Twitter account (HRSB\_Official); Recorded on the HRSB's School Cancellation Information Line 464-INFO (4636); Shared with subscribers to the board's email and text notification system;
- Communicated to local media outlets

If conditions deteriorate throughout the day, the Superintendent may close schools early when weather or road conditions are considered to be a threat to the safety of students. In the event of an early school closure, the announcement will be made by 11 am. School busses will be dispatched to schools two hours earlier than their normal regularly scheduled pick-up for the afternoon dismissal, walking students will be dismissed at the start of their regular lunch time.

**NEW!** On school days when weather conditions exist that it is not safe to open schools at the regularly scheduled time, but it is predicted that conditions will improve, a 2 hour delayed opening may be considered. Delayed openings would be considered when a severe weather event has concluded but snow clearing or other operations require additional time. Delayed opening may also be considered when the physical plant is experiencing an issue (power, water) and additional time is required to prepare the facility for opening.

In the event of a delayed opening the following will apply:

- School opening will be delayed 2 hours
- School bus pick up times will be delayed 2 hours
- Excel child care will be cancelled for the morning only
- Pre-Primary opening will be delayed 2 hours
- Each school will alter morning schedules to best address their timetables.
- Lunch times will not change
- Afternoon class schedule will not change
- Dismissal time will not change.

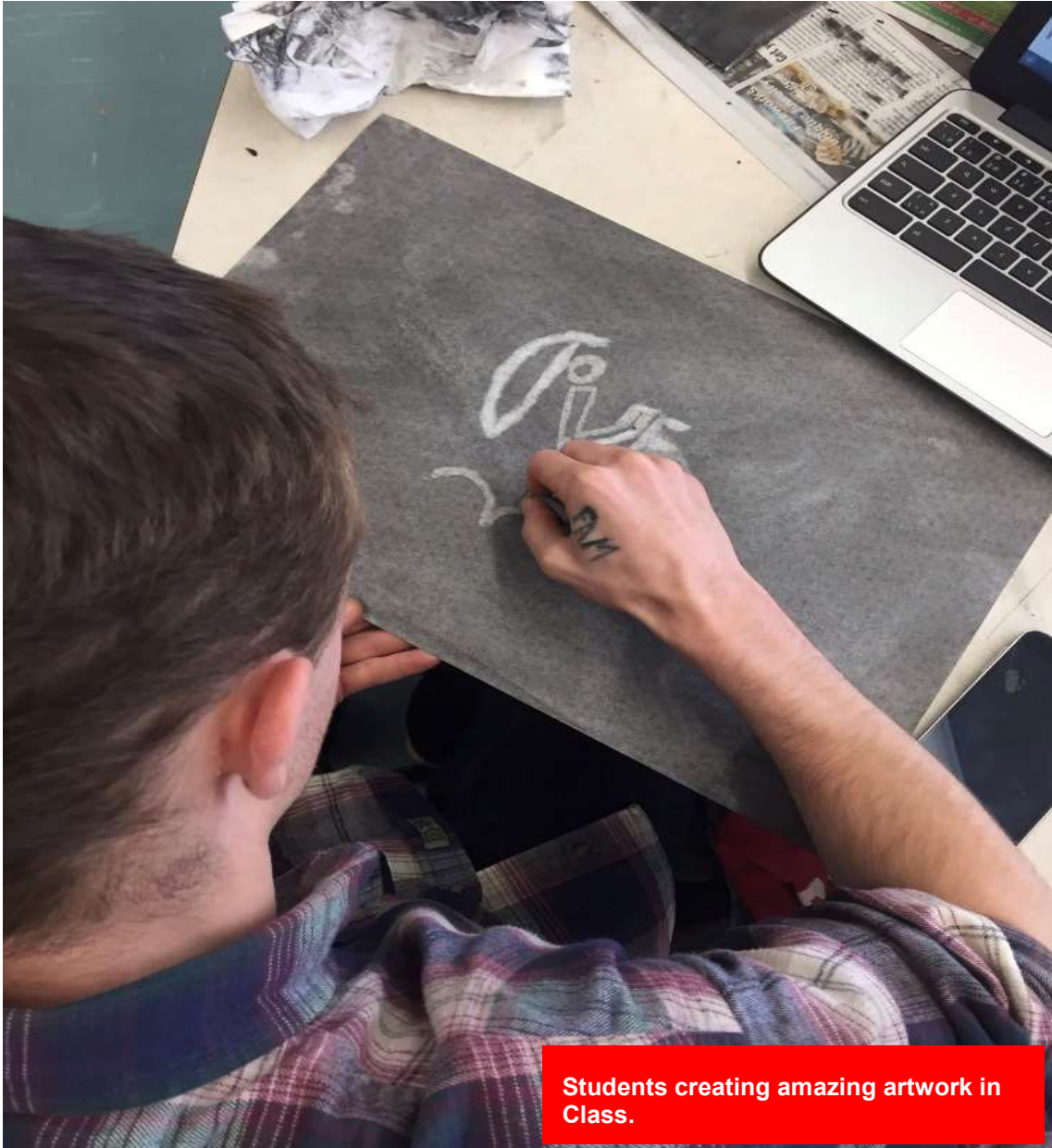
### Holiday Dinner Planning Underway

On December 19th we will host our annual Holiday Lunch, activities and New to You tables. This is a free event for all students and it is a lot of fun! We draw for prizes and gift cards throughout the day. The day takes place at our Bedford campus. Dartmouth students will leave by school bus at 11am and arrive back to Dartmouth at 1:30pm.

Regular classes take place both before and after the Holiday Lunch. Dartmouth students will need a signed permission form to attend the event. These are available in the main office.

We are excited and looking forward to a wonderful time together.





Students creating amazing artwork in Class.

### Health Center Update

BFEC is happy for our Health Nurse Sheila Lane, as she starts a new position with Community Health. We are sad to see her go and will miss her greatly. Capital Health is currently accepting resumes for a Youth Health Center Coordinator for BFEC. Once the position is filled we will be sharing this with our school community.

In the meantime, students are encouraged to visit their Guidance Counsellor or the Social Worker at each campus if they are in need of support.

### School Hours

The school doors are open at 9:20 am each morning and there is limited student supervision at this time. Students who arrive to school in the morning are to be in the cafeteria or foyer (Bedford) or in the student lounge (Dartmouth) under teacher supervision. There is no supervision after 3:20 pm each afternoon. All students must be off school premises unless in a school supported extra curricular activity.

## *What's After Graduation?*

### What's myBluePrint?

Lots of BFEC students, at both campuses, are up and running on "myBlueprint"! MyBlueprint is a new comprehensive education and career/life planning online program for students that is being implemented across Nova Scotia. This program allows students to discover their learning and personality styles, interests, and motivation factors which lead to job specific compatibility surveys for their occupation matches. There is a high school course planner which allows students to visually plan for graduation requirements and see their eligibility for post-secondary education and employment in Canada. MyBlueprint also includes the most current information about post-secondary opportunities including: specific program requirements, tuition cost, and links to program information allowing students to compare local and province-specific information on apprenticeships, programs. Guidance counsellors, Mr. Mantley and Ms. Ritcey, love talking to students about life after graduation and are excited to keep exploring myBlueprint with BFEC students!



### What's After Graduation?

As you make your way through high school, it's important to plan what you are going to do after graduation! There are many options available to you including: heading straight to the work force, attending trades programs, colleges or university. Guidance counsellors Mr. Mantley and Ms. Ritcey can help you with that!

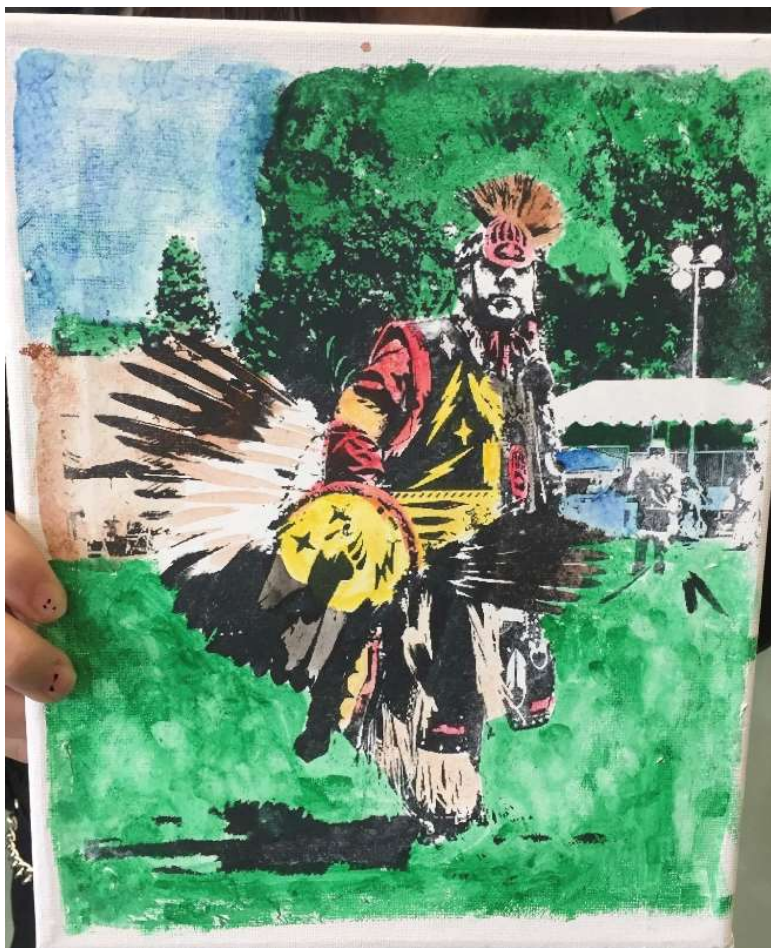
If you have no idea what you would like to do, we can complete some simple assessments of your interests, abilities and skills together that might give you some ideas about suitable career options. If you know what you want to do and where you want to go, we can help with applications, references and looking at funding options.



## Upcoming Dates

### **Important Upcoming Dates:**

Wednesday December 19- Holiday Lunch  
Friday December 21- Last Day of classes before Winter Break  
Thursday January 3- School Re-opens  
Thursday January 17- Registration begins for Quarter 3.  
January 28- Quarter 2 exams begin  
Friday February 1- Assessment and Evaluation Day (no classes)  
Monday February 4- Quarter 3 classes begin  
Thursday February 7- Quarter 2 Report Cards



### Bedford and Forsyth Education Center

#### Bedford Campus:

426 Rocky Lake Drive  
Bedford, NS  
B4A 2T5  
Phone: (902) 832-8630  
Email: [bfec@hrce.ca](mailto:bfec@hrce.ca)

#### Dartmouth Campus:

136 Pinecrest Drive  
Dartmouth, NS  
B3A 2J9  
Phone: (902)- 832-8630  
Email: [bfec@hrce.ca](mailto:bfec@hrce.ca)

